

Child with chronic pain?

Researchers at Penn State Milton S. Hershey Medical Center are trying to determine the safety and tolerability of a pain medicine in children ages 6-17 who have moderate to severe chronic pain.

Qualified participants will complete diaries about their pain, attend clinic visits, and take study medication.

Compensation is provided for time and travel.

Children may be eligible for this study if

- between the ages of 6 and 17.
- have chronic pain requiring use of pain medication for at least five days
- weigh at least 110 pounds

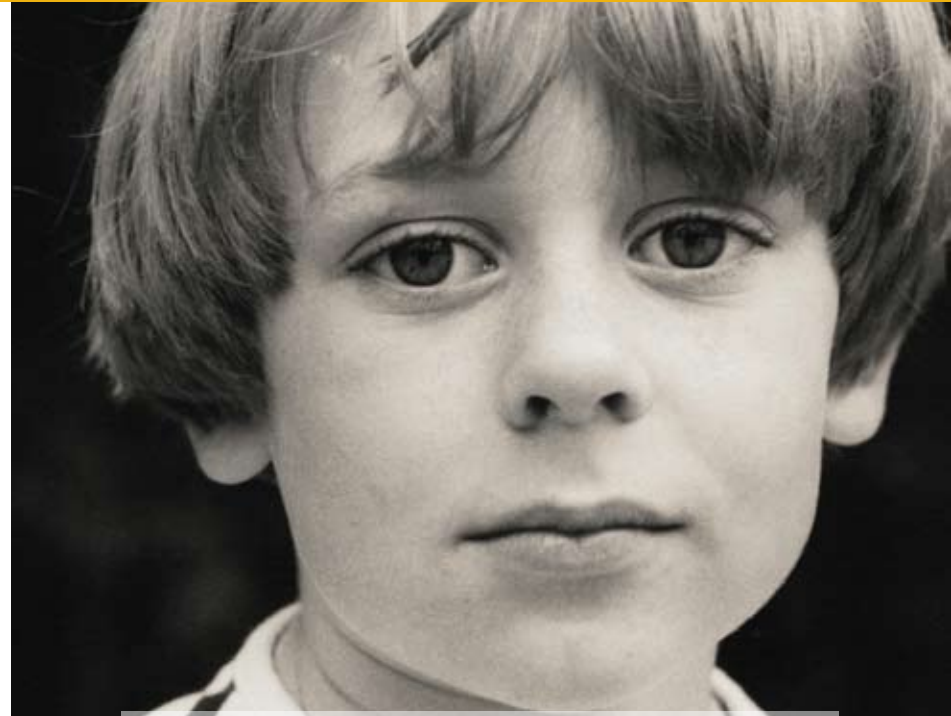
To see if you are eligible, contact study coordinator Sarah Sturgis at 717-531-7762

Study director

Andrew Freiberg, M.D.

Penn State Hershey Pediatric Hematology/Oncology

PENNSSTATE HERSHEY



RESEARCH OPPORTUNITY



Sarah Sturgis

717-531-7762

