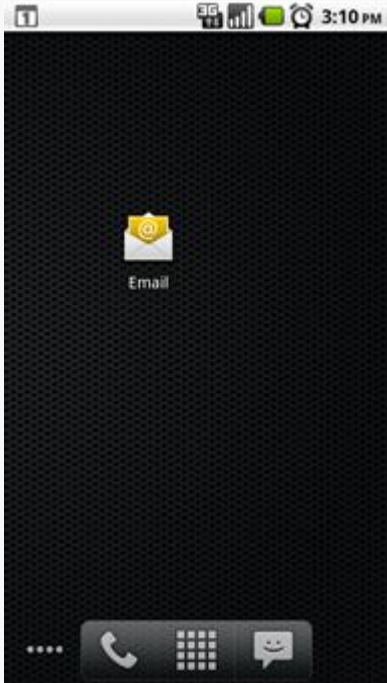
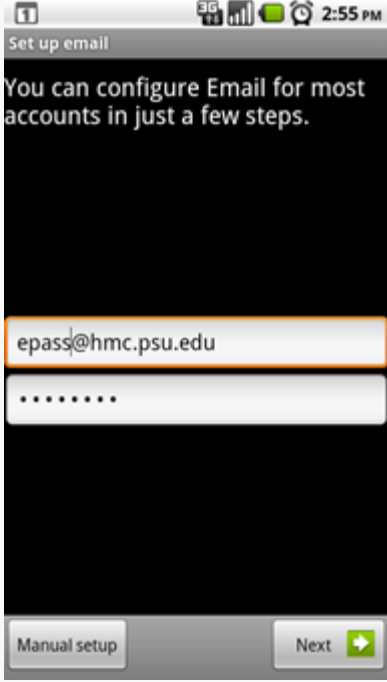
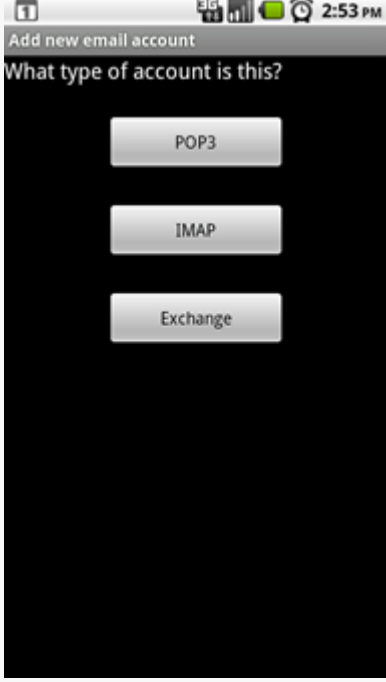
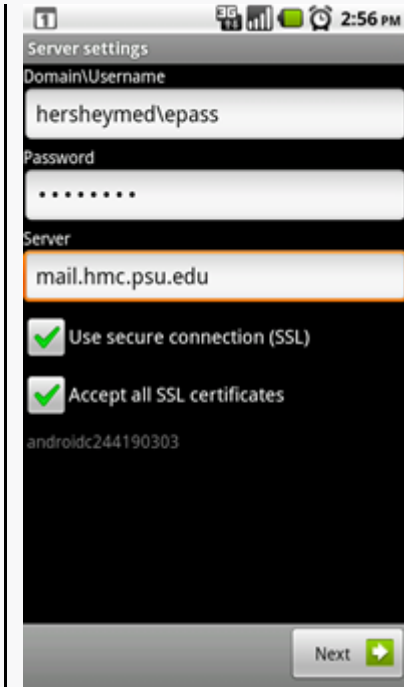


HMC Exchange Setup for Android Version 2.2 and later

(Note: There are some minor differences between Android versions, but these directions should carry over to most. Also, not all versions of Android 2.2 are compliant with Microsoft Exchange 2010 ActiveSync policies and will prevent the device from completing the setup.)

		
<p>Go into the apps tray and select the EMAIL app</p>	<p>Type in you hmc email address which would be your epass@hmc.psu.edu, and your password</p> <p>DO NOT hit the next button, hit manual setup instead.</p>	<p>Select EXCHANGE account</p>

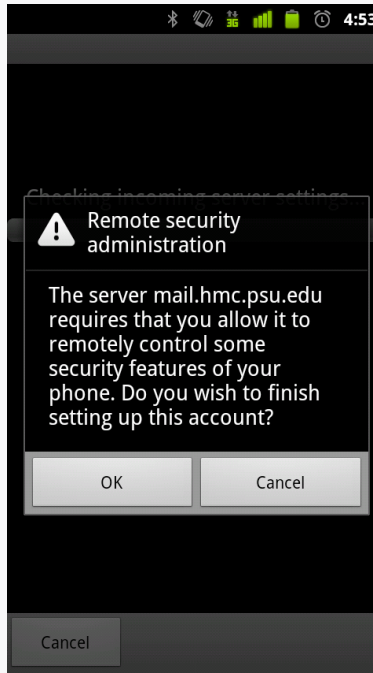


Domain \Username:
hershey\med\epass

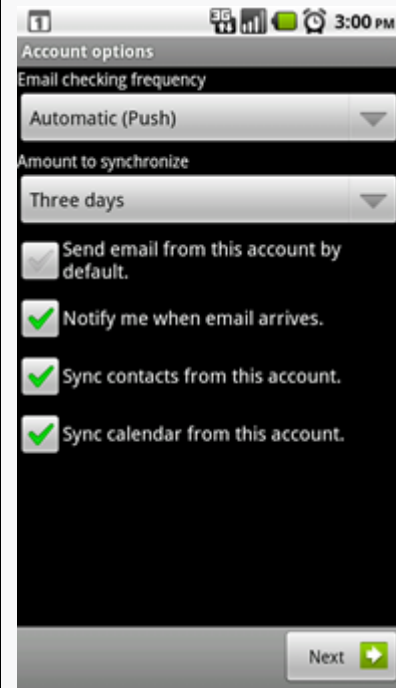
Password: Your ePass
Password

Server:
mail.hmc.psu.edu

Make sure that **USE
SECURE
CONNECTION (SSL)**
and **ACCEPT ALL SSL
CERTIFICATES** is
checked



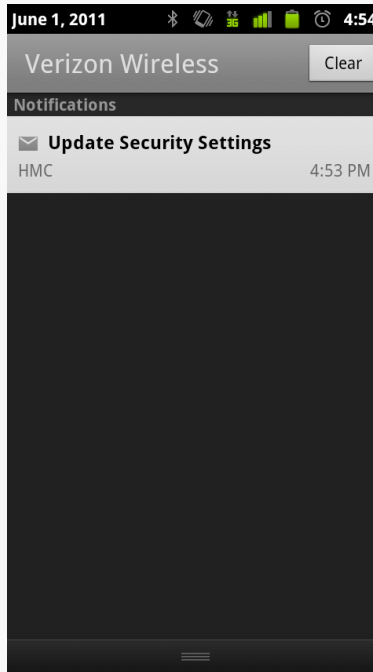
You may be prompted by
this screen. Just hit OK



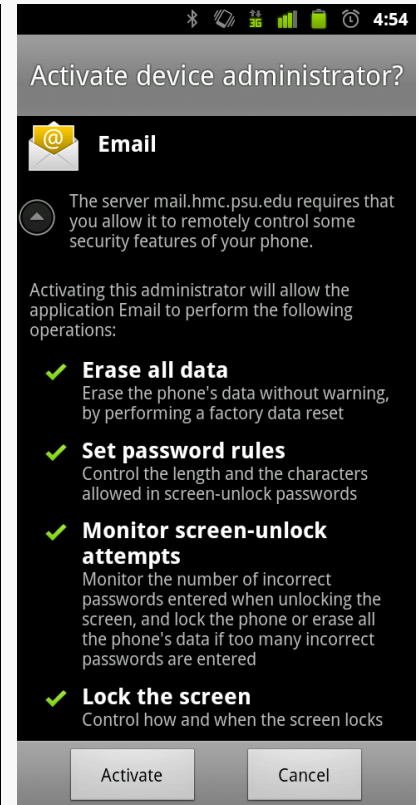
Choose the options that you
would prefer.



Name the account anything you want now. Hit Done. You're done; it should start pulling in information from exchange now. Even though we set this up in e-mail, this will also pull your exchange calendar info as well.



An update security settings may show up in your Notifications bar.



This security screen is only informing you that these individual/specific mail server policies can be set at any time by the system administrator. Hit activate and your done.